

Progress on Metadata System

High Energy Physics Team
KISTI, Daejeon, Korea

J.H Kim



KPS 2011.10.21

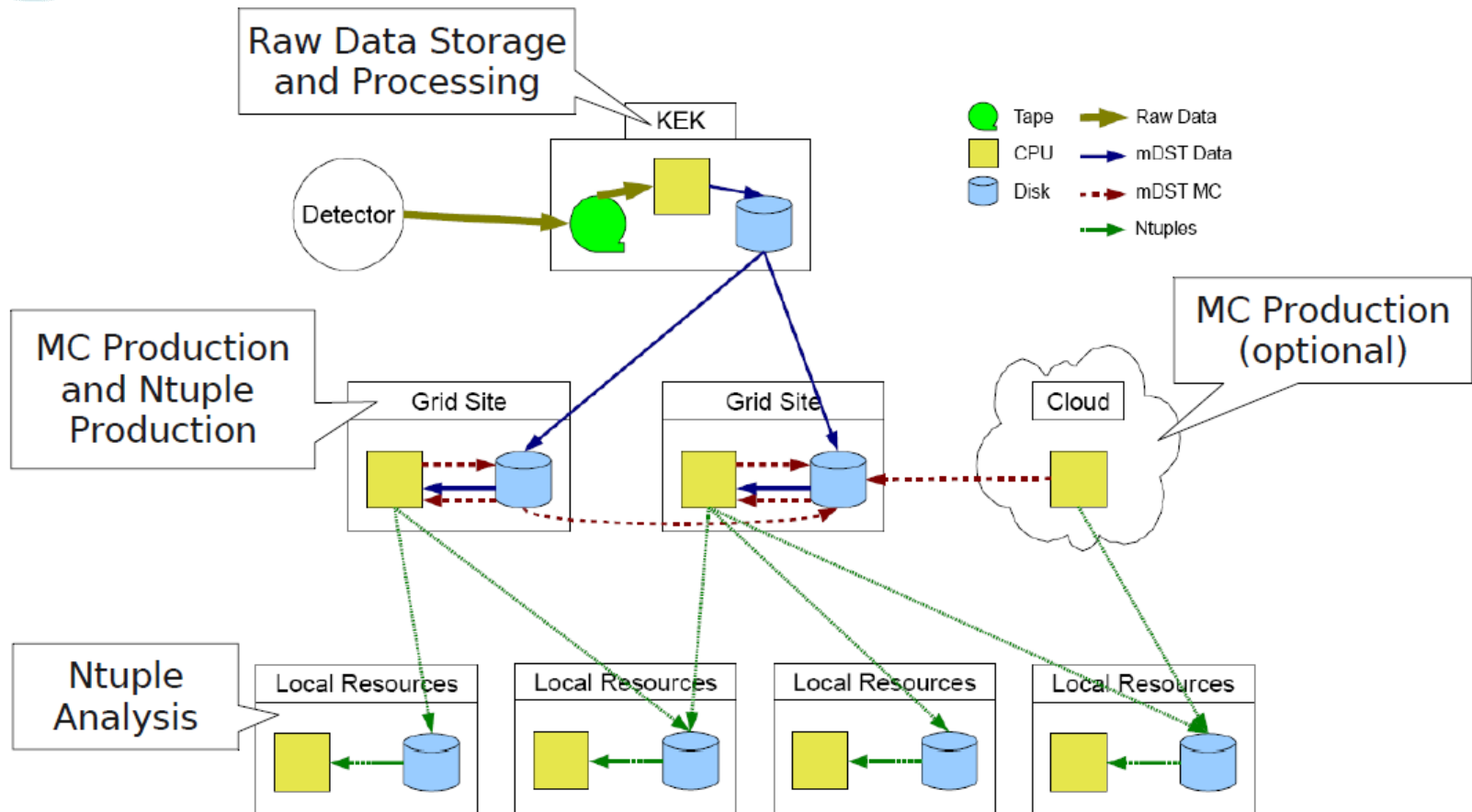


OverView

1. Belle II computing model
2. User created dataset
 - 1) Investigation of Belle II data
 - 2) Scenario of Belle II Data
3. Registration system
4. Summary and Next step

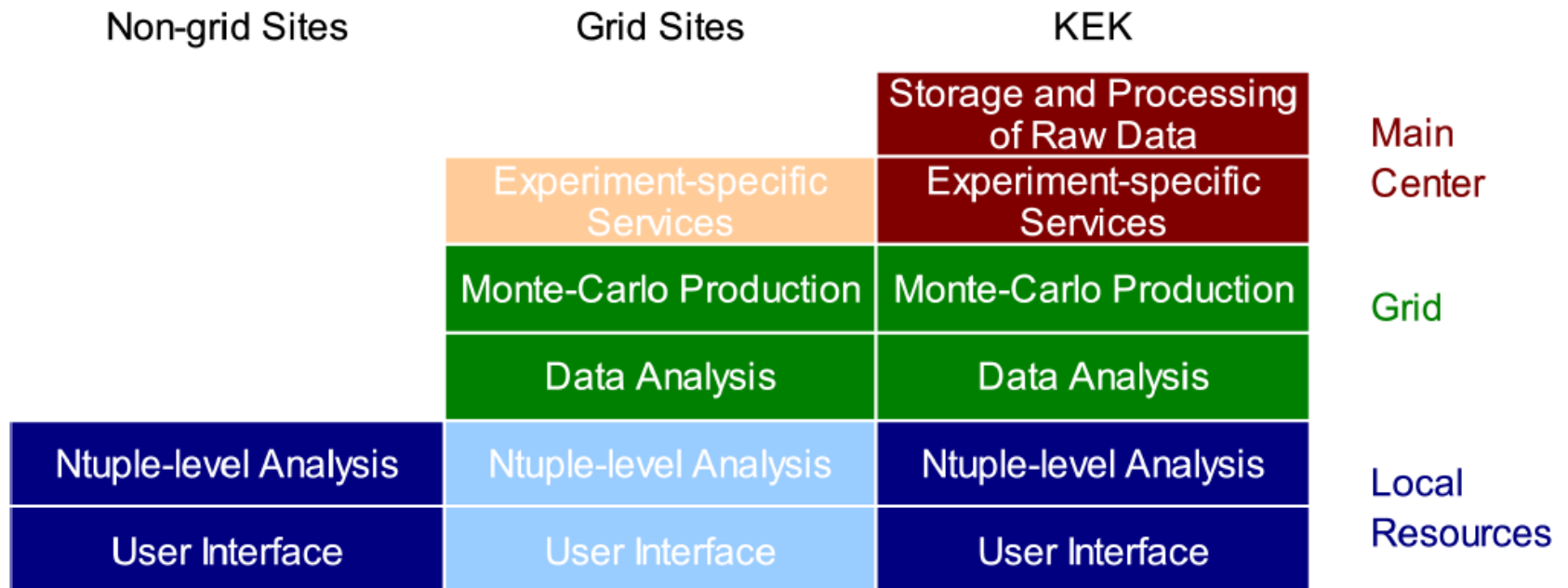


Belle II Computing model





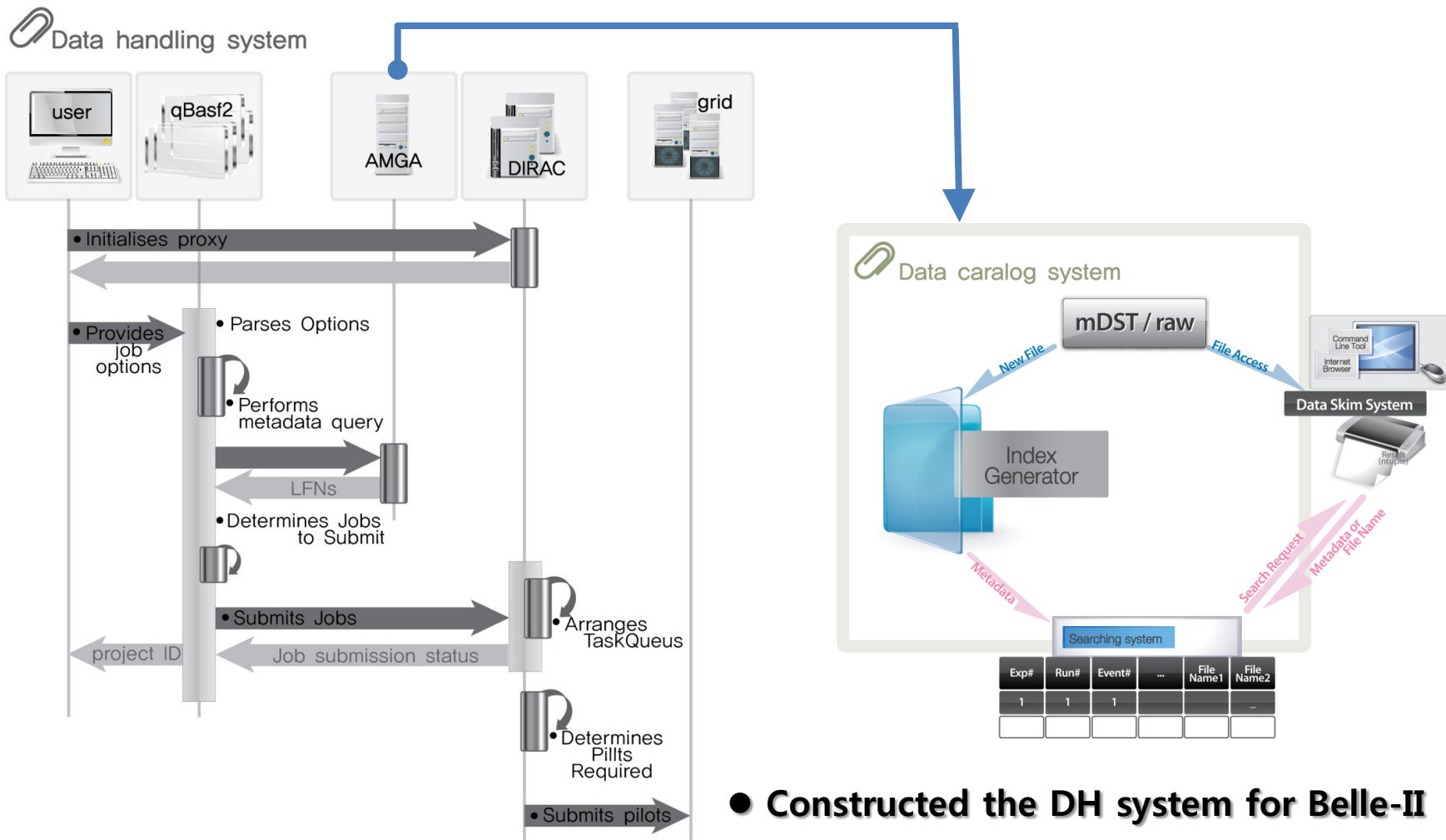
Belle II Computing model





Investigation of Belle II Data

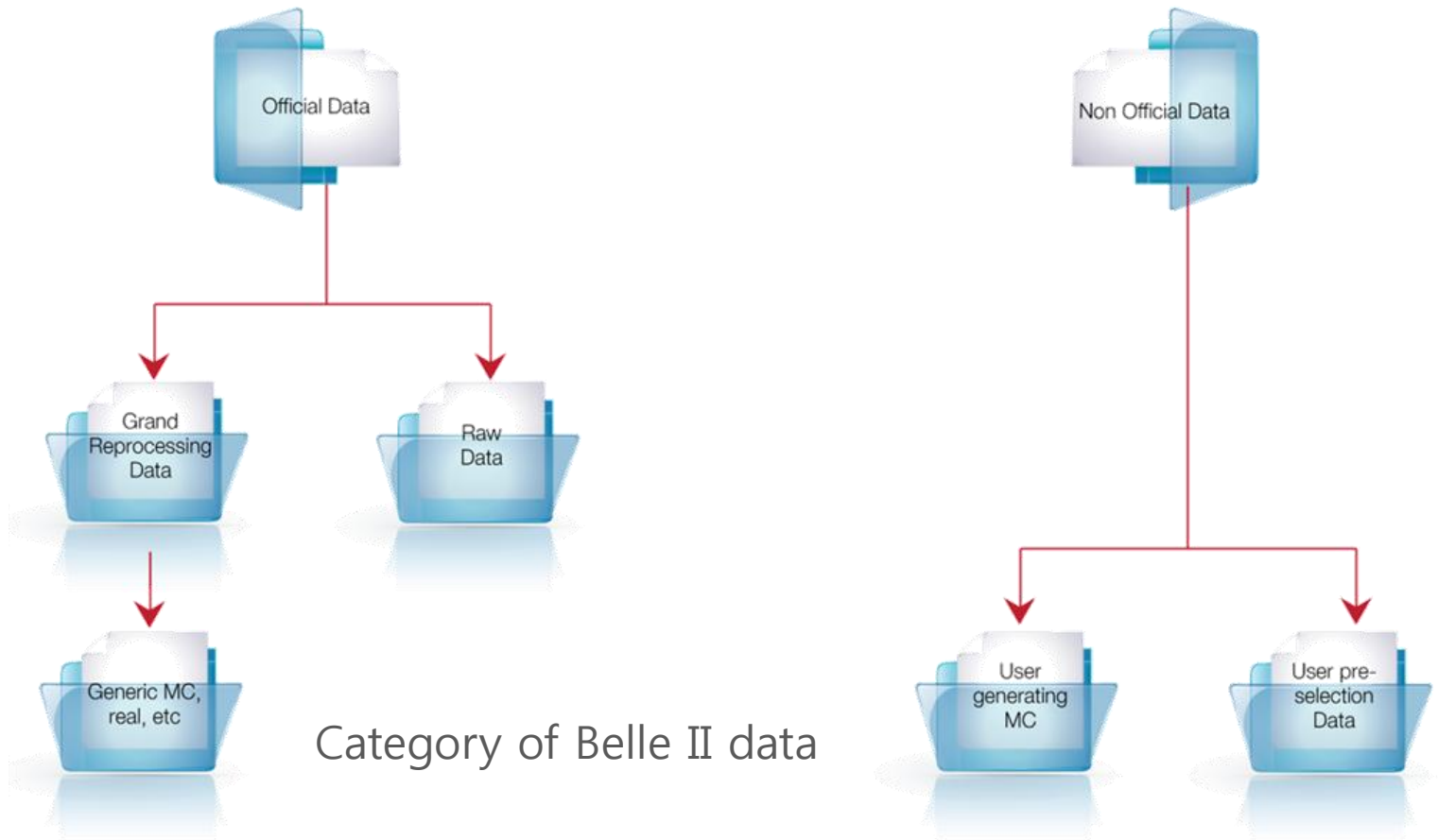
- To improve the scalability and performance
- We apply AMGA which is middle ware for gLite





Investigation of Belle II Data

1 Suggestion of user created data set



- Estimation for user created dataset

We permit to make the duplication for user created data set by the other users

- ✓ Thomas estimation (< 70MB)
- ✓ User generating MC is OK

We estimated the other situation for increasing user created dataset size

When we permit to make the duplication for the official data.
When users make the pre-selection files.

- Those lead to increase the metadata size

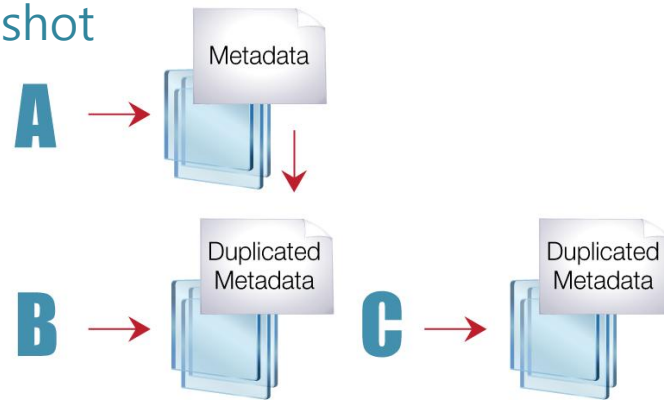




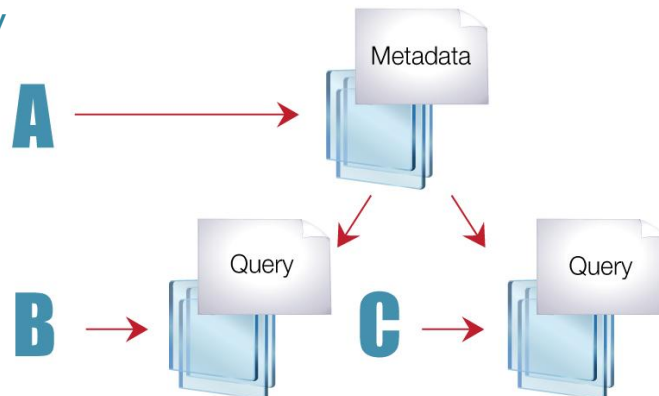
Suggestion for user created dataset

- To reduce the metadata size

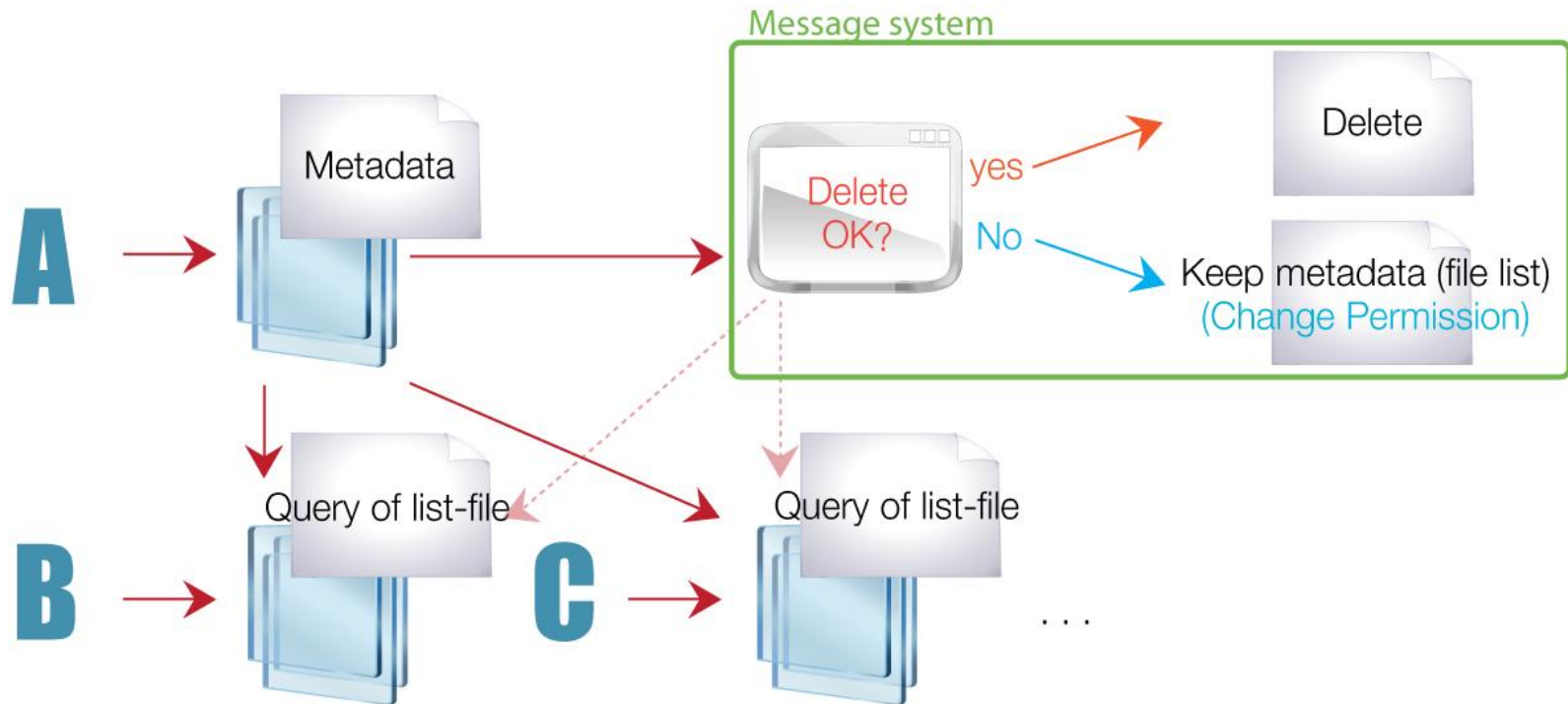
1. Snap shot



2. Query



3. Snapshot-like Method



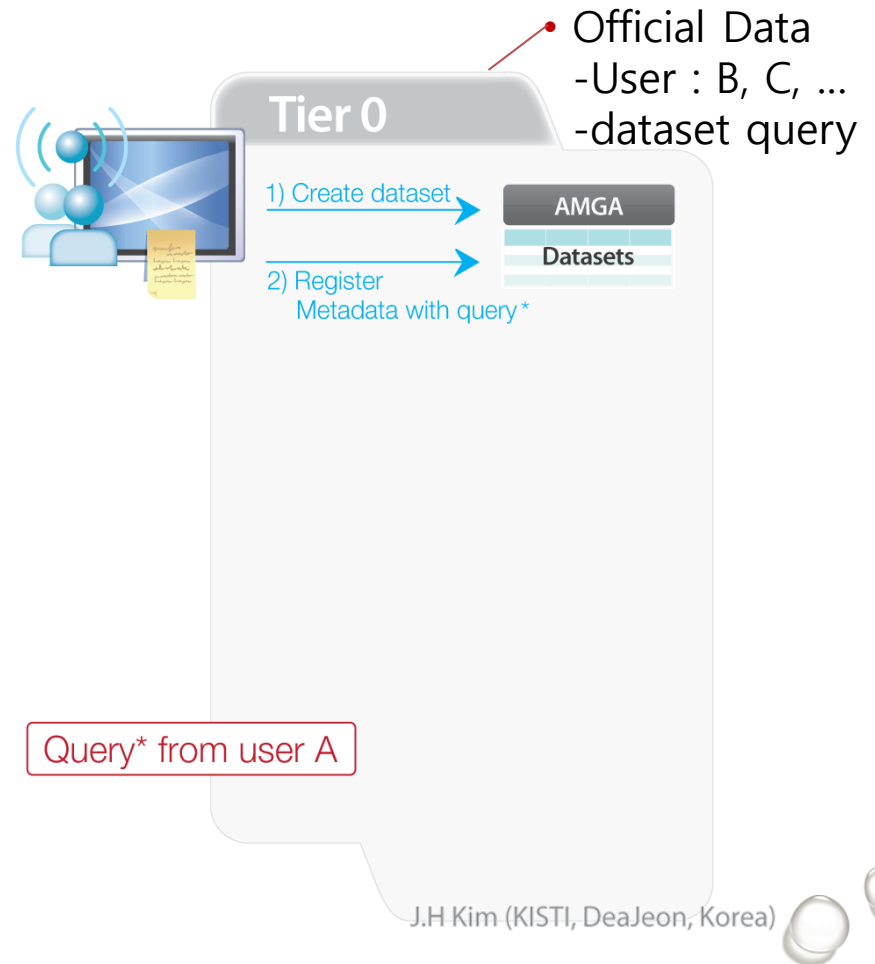
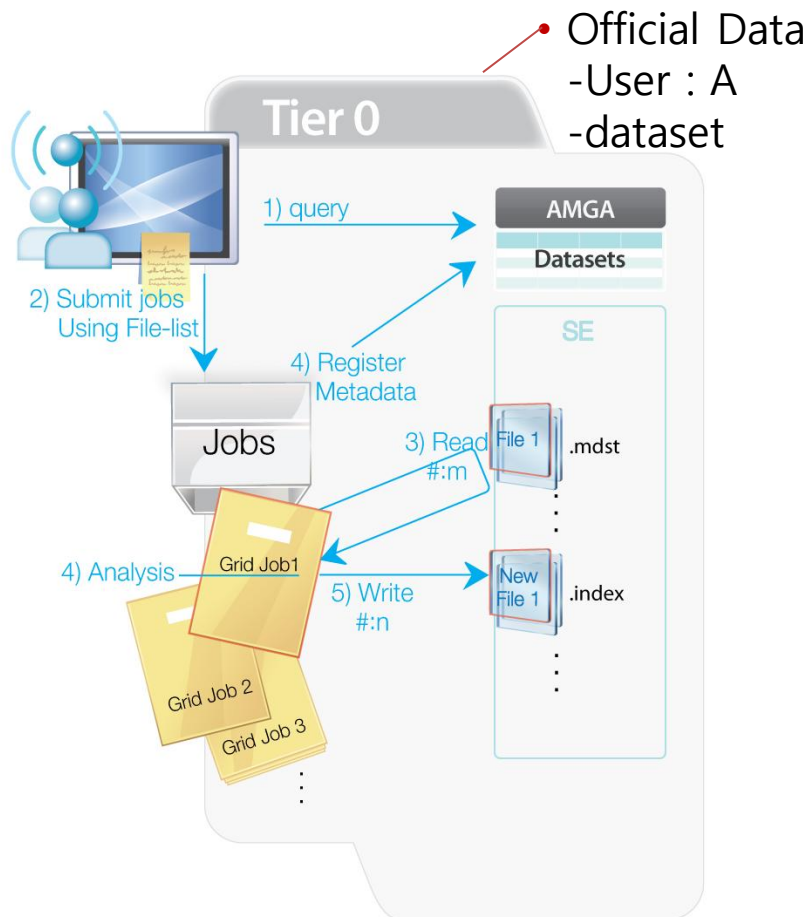
- Snap-shot style ➡ snap-shot like style for user created data
- To store queries which are not duplicated
- To keep the metadata for old data



Data access scenario

- Official Data

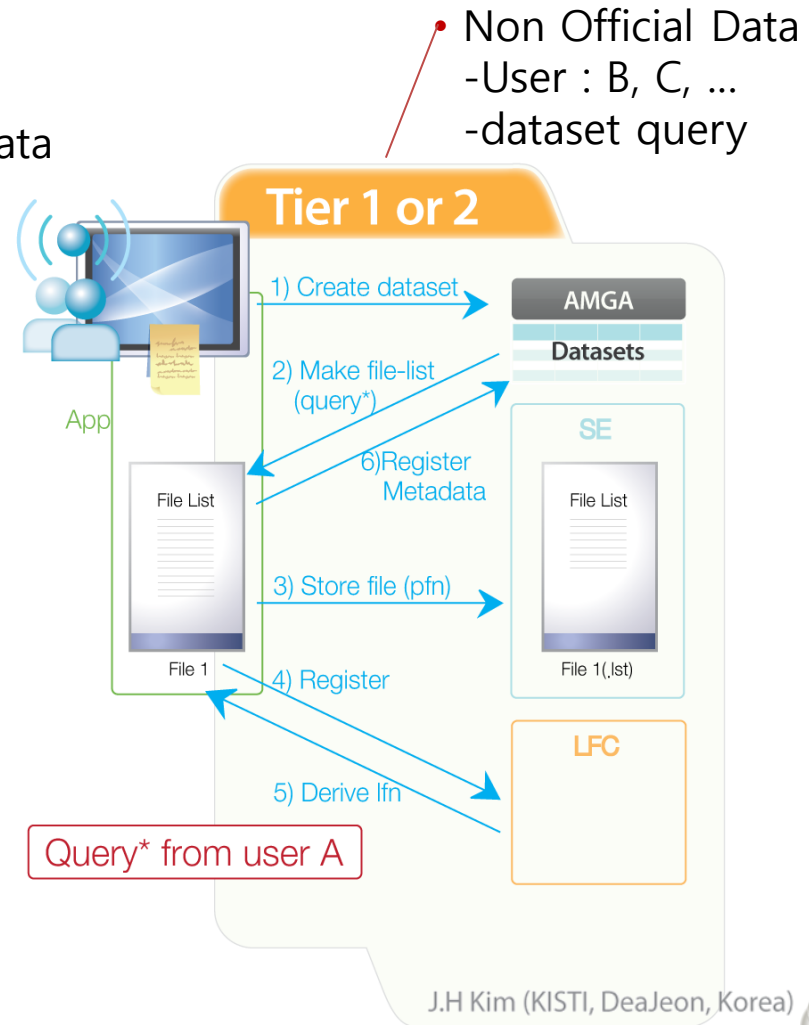
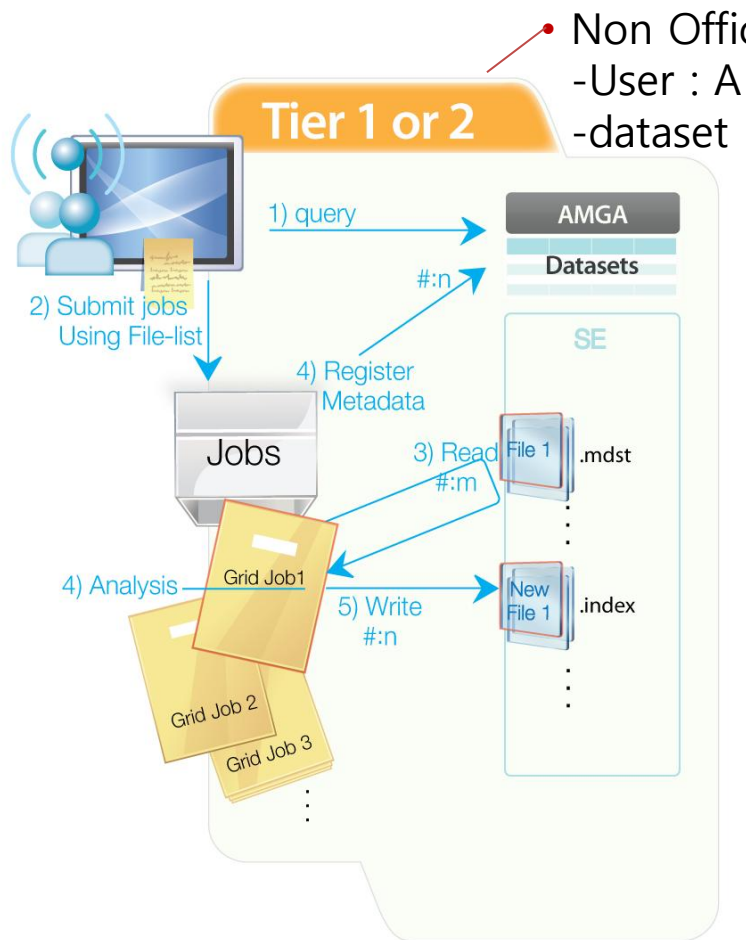
Scenario I



Data access scenario

- Non Official Data

Scenario II

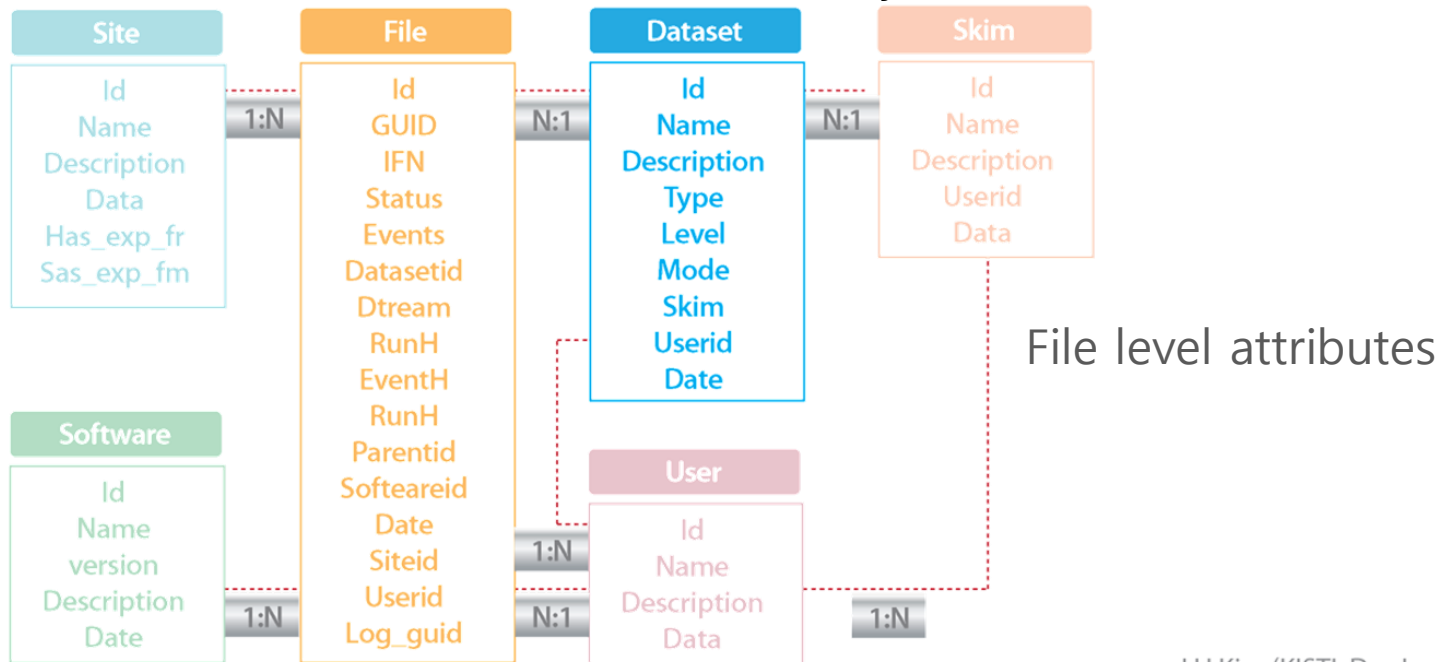


Registration of Metadata

Our goal is to booking the data information automatically into metadata system and LFC

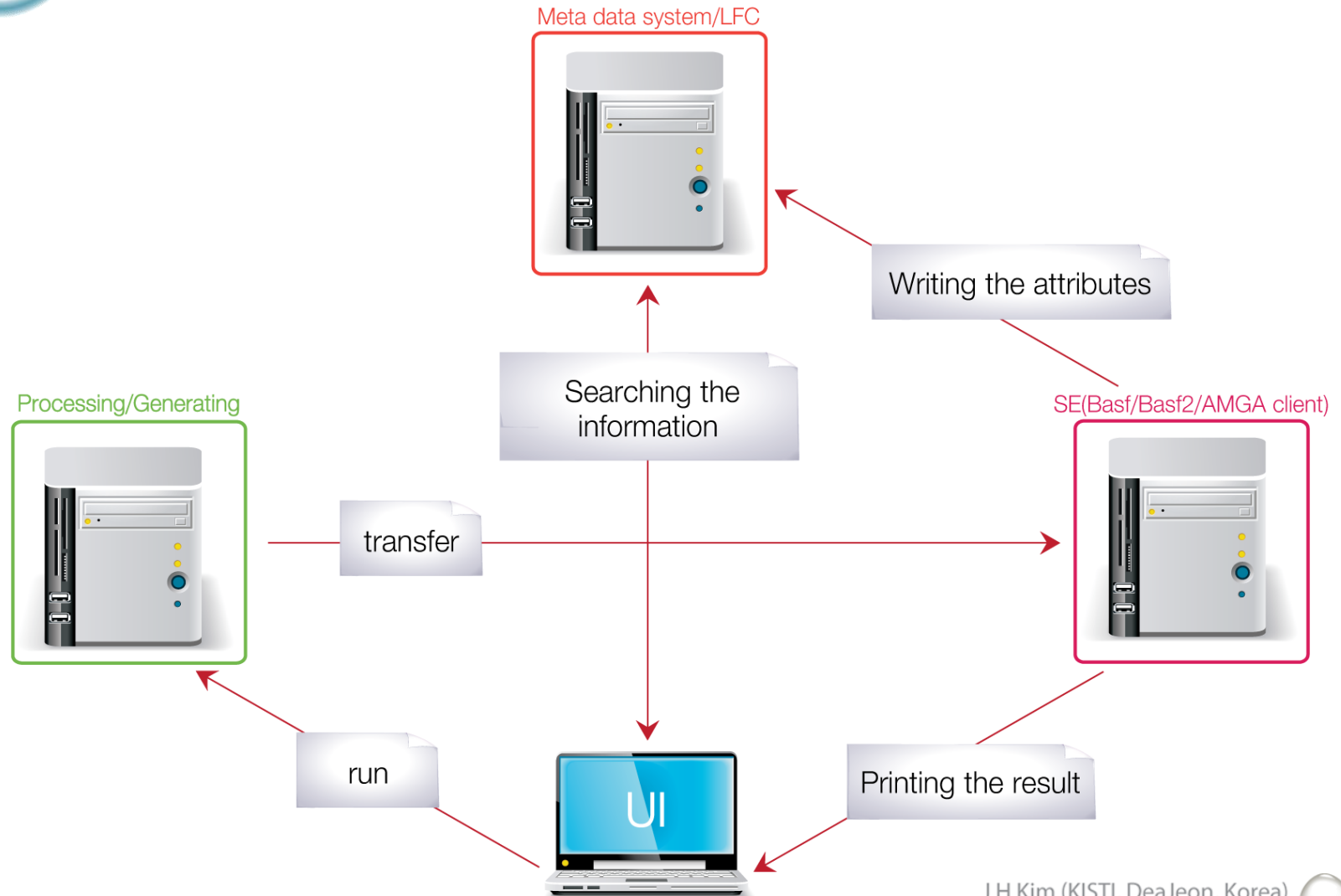
A data set registration is required for the real Belle II data analysis on the distributed computing.

We need to understand the Belle II analysis framework.





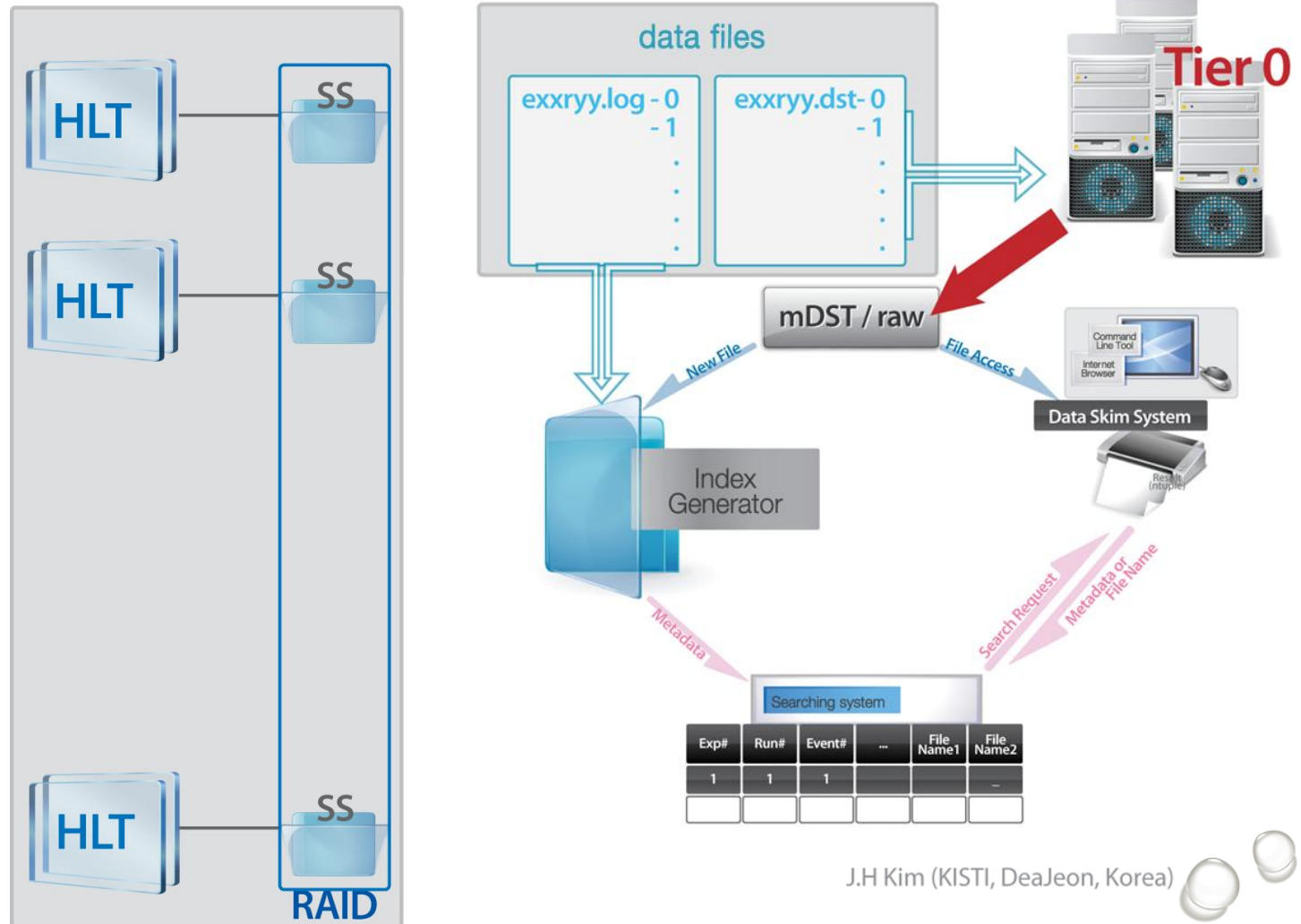
Workflow of registration





Handling the raw data in meta data system

We will register the meta data with the file location and log files.





Workflow

- ✓ Performing the framework.
- ✓ Analizing log information
- ✓ Return the information : We will give it such as the parameters.
- ✓ Opening in LFC and metadata system.
- ✓ Registeration metadata system.
- ✓ Closing metadata system.



To install basf2

- ✓ We have a problem for the full local installation.
- ✓ Although following the instruction, we have warning message for root and geant4 installation.
- ✓ We need to fix the problem or use the central release software.
- ✓ Help us to fix it.





Summary and Next Step



We suggest the idea to reduce the metadata size.



We want to make the registration system automatically.



We need your help for understanding basf2



Progress on



THANKYOU

Metadata System